



Corded and Cordless Vacuum Cleaner DVC151L

Pembersih Vakum Kuasa Elektrik Dan Tanpa Kord 充电式 + 电源驱动吸尘器

Cordless Vacuum Cleaner DVC153L

Pembersih Vakum Tanpa Kord 充电式吸尘器

High Efficient Cleaning

Pembersihan Kecekapan Tinggi 高效清洁



18V Lithium-ion X2
18V锂离子 X2



Teknologi Ekstrim Litium-ion
锂离子技术



PRODUCT
DETAILS
Models and specs
may vary by country



PRODUCT
DETAILS
Models and specs
may vary by country

Large Capacity
Kapasiti Besar
最大容量

15L

*Masa Penggunaan Berterusan
连续使用时间

Continuous
Usage Time
with BL1850B x2
(Dial Mode 5)

40min
(approx.)

* Continuous Usage Time/ Work Amount:
Actual performance may vary based on application.
* Masa Penggunaan Berterusan/ Jumlah Kerja: Prestasi sebenar
mungkin berbeza berdasarkan aplikasi.
连续使用时间/ 工作量: 实际表现可能因应用而异。



Large on-off switch allows for
easy on/off switching

Suis on-off besar 大型主电源开关

Main power switch

functions only when main power switch is on to prevent
accidental switch-on during transportation

Suis on-off besar hanya berfungsi apabila suis kuasa utama dihidupkan untuk
mengelakkan permulaan yang tidak disengajakan semasa pengangkutan
仅使用主电源开关启动机器, 以防止在运输过程中意外启动



Variable suction power control by dial
Suction power is variably adjustable to suit application

Dial kawalan sedutan 吸力控制调节按钮



Dual battery fuel gauge

indicates the power remaining in each battery
individually in 3 stages with 3 LEDs

Penunjuk kapasiti 2 bateri individu dengan 3 LED dalam 3 peringkat
双电池电量计通过3个LED指示3个阶段中每个电池剩余的电量



DVC151L

HEPA
filter

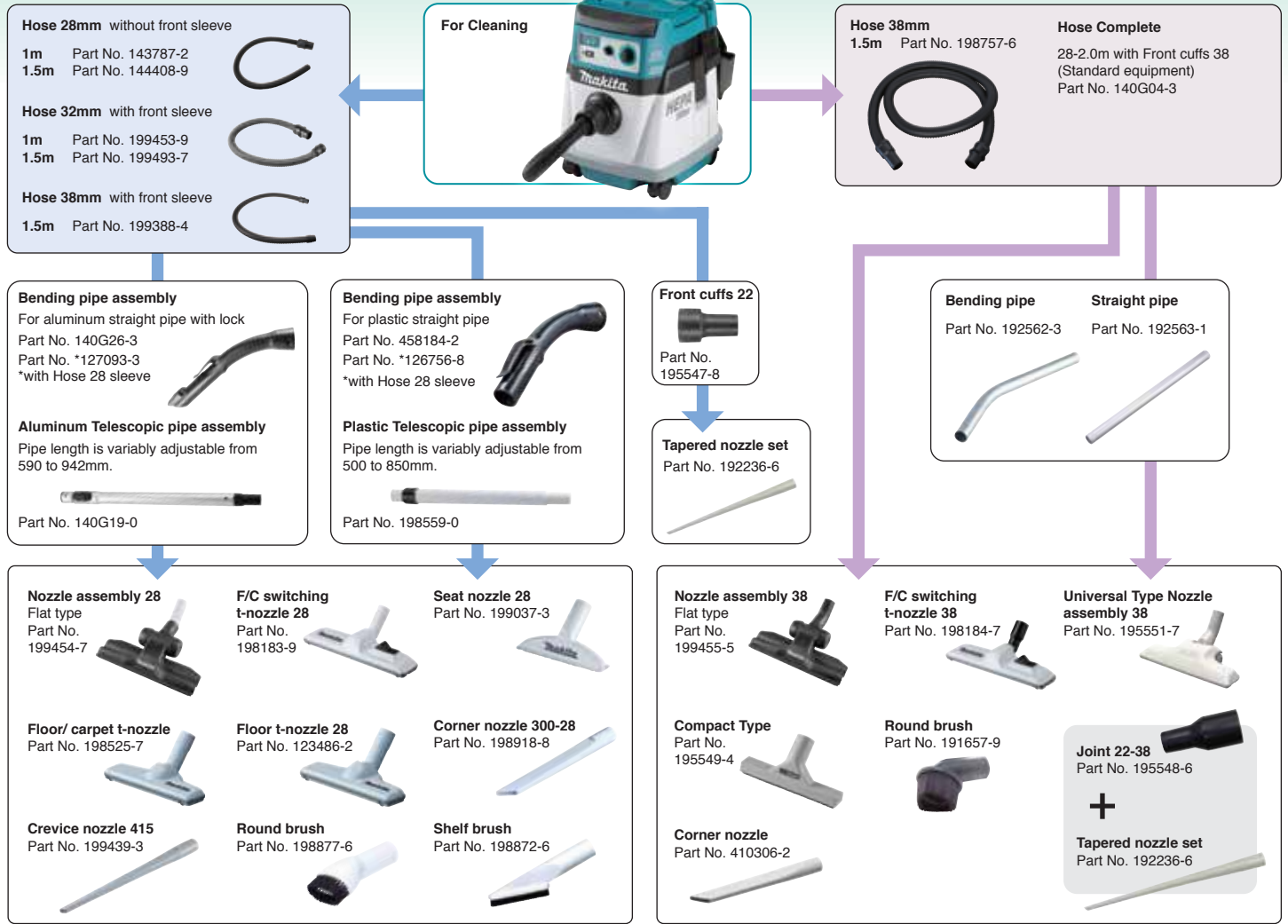


DVC153L

BL MOTOR XPT HEPA
filter



Accessories Aksesori 配件



Filter complete, Pre filter and Damper

Filter complete HEPA Dry only Part No. 197166-6	Pre-filter set Part No. 195553-3	Damper set Part No. 195552-5	Paper filter set (5pcs) for dry dust except powder Part No. 194556-4 (A-48430)	Dust paper filter 7L (5pcs) for dry powder Part No. 194719-2 (A-49541)	Filter bag set 15L (5pcs) for dry powder Part No. 195557-5	Poly bag set (10pcs) Part No. 195432-5
--	--	--	---	---	---	--



DVC151LZ / DVC153LZ

Li-ion Ah 6.0 5.0 4.0 3.0 2.0 1.5

Capacity Kapasiti 容量	Dust: 15L
Max Air Flow Aliran Udara 最大空气流量	AC: 3.6m ³ /min DC: 2.1m ³ /min DVC151L DC: 2.1m ³ /min DVC153L
Max Sealed Suction Sedutan Terkedap (Turus Air) 最大密封吸力(水柱)	AC: 24kPa DC: 9kPa DVC151L DC: 9.8kPa DVC153L
Max Suction Power Kuasa Sedutan 吸力	AC: 320W DC: 25 - 70W DVC151L DC: 90W DVC153L
Dimensions (L x W x H) Dimensi 体积	366x334x421mm (14-3/8"x13-1/8"x16-1/2")
Net Weight Berat Bersih 净重	10.3kg (22.6 lbs.) DVC151L 8.6kg (19.0 lbs.) DVC153L
Continuous Usage Time (approx.) Masa Penggunaan Berterusan 连续使用时间	30 min with BL1850B x2 (High speed mode) DVC151L 40 min with BL1850B x2 (Dial mode 5) DVC153L
Standard equipment Aksesori standard 标准附件 DVC151LZ: Floor Nozzle, Corner Nozzle, Straight Pipe, Bent Pipe, Hose (38, 28mm), Front Cuffs (22, 24, 28), Plastic Dust Bag, Plastic Dust Filter, Damper, Dry Powder Filter, Tool Box, Connection Cord DVC153LZ: Floor Nozzle, Corner Nozzle, Straight Pipe, Bent Pipe, Hose (38, 28mm), Front Cuffs (22, 24, 28), Plastic Dust Bag, Plastic Dust Filter, Damper, Dry Powder Filter	
Available options Pilihan 选项 Z: Without Charger & Battery	

Like us on Facebook
MAKITA MALAYSIA

* Continuous Usage Time/ Work Amount: Actual performance may vary based on application. Items of standard equipment and specifications may vary by country or area. The weight and dimensions may differ depending on the attachments, including the battery cartridge. All pictures shown are for illustration purposes only. In the event of differences arising between the English, Bahasa Malaysia and Chinese versions, the English version shall prevail. Masa Penggunaan Berterusan/ Jumlah Kerja: Prestasi sebenar mungkin berbeza mengikut aplikasi. Spesifikasi standard mungkin berbeza mengikut negara. Berat bersih dan dimensi berbeza bergantung pada jenis bateri yang digunakan. Imej yang ditunjukkan hanya untuk tujuan ilustrasi sahaja. Jika terdapat perbezaan antara bahasa, maka maklumat versi Bahasa Inggeris harus digunakan. 连续使用时间/ 工作量: 实际表现可能因应用情况而异。注: 规格可能因销往国家之不同而异。重量与尺寸因附件(包括电池组)而异。图片仅供参考, 如果内容有任何差异或不一致, 概以英文版本为准。



Makita Power Tools (Malaysia) Sdn. Bhd. Co. Registration No.: 201301001778 (1031615-M)

HQ & Service Centre
 总部和服务与展示中心
 Lot 824, Jalan Subang 5, Subang Industrial Area,
 47500 Subang Jaya, Selangor.
 Tel: 03-8023 0824 (General) | Fax: 03-8022 1448
 03-8022 1443 (Service)

Johor (Johor Bahru) Service Centre
 柔佛(新山)服务与展示中心
 No.12 & 14, Jalan Rosmerah 2/9,
 Taman Johor Jaya,
 81100 Johor Bahru, Johor.
 Tel: 07-364 9406 | Fax: 07-364 9407

Sarawak (Kuching) Service Centre
 砂拉越(古晋)服务与展示中心
 Lot 1227, Lorong Demak Indah 2A,
 Demak Laut Industrial Area, Phase 2A,
 93050 Kuching, Sarawak.
 Tel: 082-496 800 | Fax: 082-496 900

Sabah (Kota Kinabalu) Service Centre
 沙巴(亚庇)服务与展示中心
 Lot 19, Jalan Buah Duku,
 Kolombong Light Industrial Estate, Off Kolombong,
 Kolombong Zone 1, 88450 Inanam, Kota Kinabalu, Sabah.
 Tel: 088-388 278 | Fax: 088-388 279



www.makita.my
 makita@makita.my